

Name: ANSWER KEY

Date: _____

Per.: _____

Unit 2 Quiz #2 Review Homework

1. Define midpoint:

divides a line segment into 2 congruent parts

2. M is the midpoint of \overline{AB} . Write as many relationship equations as you can.

(Example: $AM + MB = AB$)



① $AM = MB$

② $2(AM) = AB$

③ $2(MB) = AB$

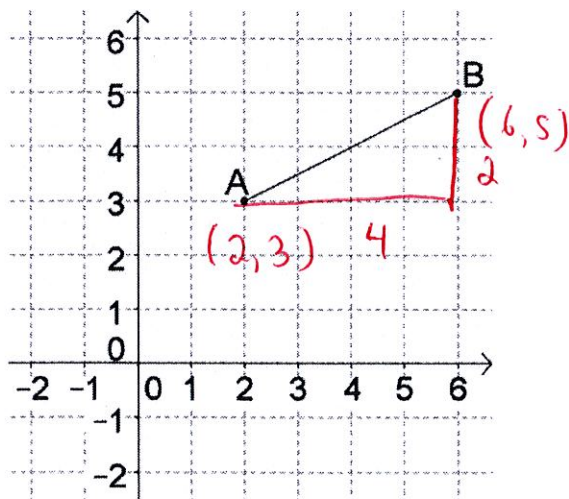
④ $\frac{1}{2}(AB) = AM$

⑤ $\frac{1}{2}(AB) = MB$

3. What is the difference between congruence and equality?

Congruence refers to same shape and same size of an object or figure. Equality refers to the same amount or value (numbers)

4. Find the midpoint of \overline{AB} , then find the distance between A and B.



midpoint: $\left(\frac{2+6}{2}, \frac{3+5}{2}\right)$

$(4, 4)$

distance: $4^2 + 2^2 = c^2$

$16 + 4 = c^2$

$20 = c^2$

$\sqrt{20} = c$

$AB = \sqrt{20}$

5. List what you know about a perpendicular bisector.



① $\overline{AC} \cong \overline{CB}$

② C is the midpoint of \overline{AB}

③ perp. bisector hits \overline{AB} at a 90° angle.

THIS DOES NOT COVER EVERYTHING THAT WILL BE ON THE QUIZ. Be sure you are practicing problems from old handouts, homeworks, etc.